



Dannele Peck
Director
Ag Economics

Windy Kelley
Coordinator
Extension

Hailey Wilmer
Postdoc Fellow
Ethnography

Matt Reeves
Co-Lead, FS
Rangeland Modeling

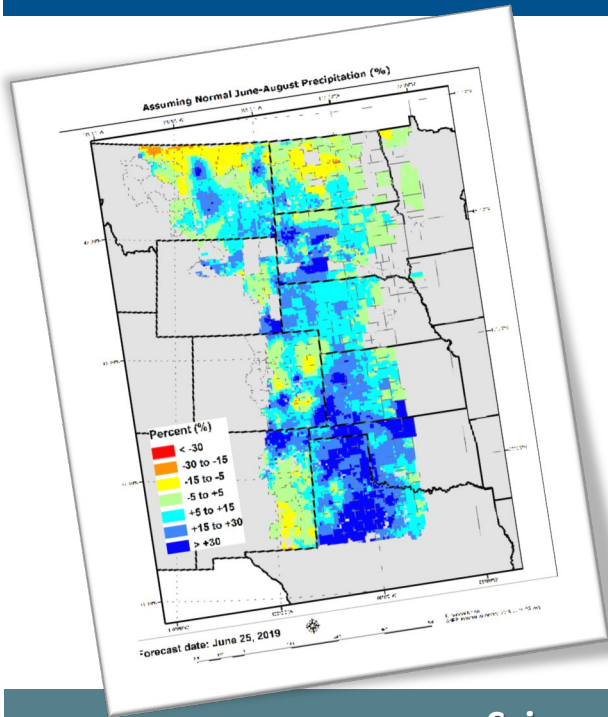
Rafael Guerrero
Co-Lead, NRCS
Director, Tech Center

Justin Derner
Research Leader
Rangeland Science

5-Year Accomplishments

Mission: Northern Plains Climate Hub (NPCH) strives to reduce climate-related risks in agriculture, forestry, and rural communities by collaborating with USDA agencies and other partners to develop and deliver science-driven strategies & tools that land managers can use to make climate-informed decisions.

Tool Development & Technology Transfer



Grass-Cast: NPCH has been instrumental in developing and conducting public outreach for this popular new grassland productivity forecast. It serves ranchers & rangeland managers across the Great Plains and is being expanded to other regions.

- ✓ **Organized** workshops and webinars across 10 states to enable stakeholders to co-design and iteratively improve Grass-Cast.
- ✓ **Trained** ~100 NRCS and Extension rangeland professionals to use Grass-Cast to help inform their clients' grazing decisions.
- ✓ **Led** the development and on-going content management of Grass-Cast's website: www.grasscast.agsci.colostate.edu.
 - Accessed by 529 users during May & June 2019 alone.
- ✓ **Secured** funds to help support Grass-Cast research & outreach.
- ✓ **Partnered** with ARS, USFS, NRCS, Colorado State University, University of Arizona, National Drought Mitigation Center.

Science Syntheses & Assessments

- Co-authored **4th National Climate Assessment**, ch22
- Co-authored **Climatic Change** special issue articles
- Co-edited a special issue in **Rangelands** on drought
- Authored a **N. Plains Vulnerability Assessment**
- Helped state climatologists develop a template for monthly **Drought Impacts & Outlook Summaries**

