



**Dannele Peck**  
*Director*  
*Ag Economics*



**Windy Kelley**  
*Coordinator*  
*Extension*



**Matt Reeves**  
*Co-Lead, FS*  
*Rangeland Modeling*



**Rafael Guerrero**  
*Co-Lead, NRCS*  
*Director, Tech Center*



**Justin Derner**  
*Research Leader, ARS*  
*Rangeland Science*

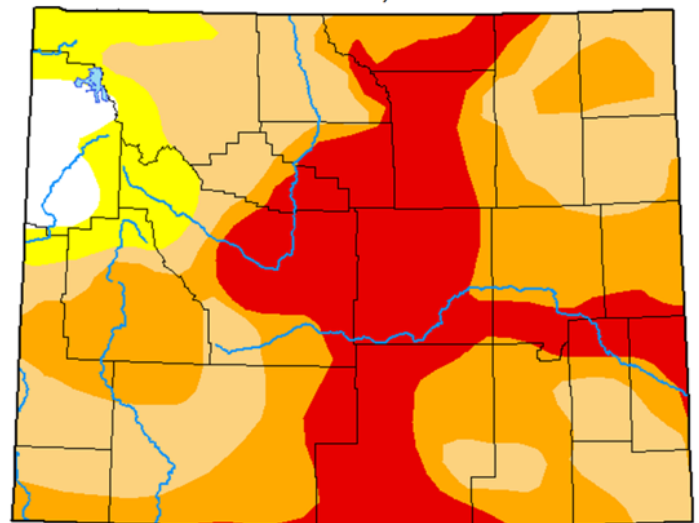
## Selected Accomplishments in FY20 Q4

### Outreach

Throughout much of 2020, the state of Wyoming experienced widespread and on-going drought. The need emerged for an organized and inclusive process to **gather impacts and conditions** from affected stakeholders across the state. In response, the Northern Plains Climate Hub formed the **Wyoming Conditions Monitoring Team (WCMT)** to coordinate drought discussions among state and Federal partners. The Hub also created a portal for Extension and outreach field-staff to submit **on-the-ground condition reports** in an objective and consistent way. **Over 40 reports** came in from the field through this new communication channel. This input is helping to inform the WCMT's draft recommendations to the U.S. Drought Monitor. Read this [Extension news story](#), which highlights the on-going effort.

### U.S. Drought Monitor Wyoming

October 20, 2020



droughtmonitor.unl.edu



Pickings were slim for livestock in drought-affected areas this year.  
[Photo credit: Melissa Johnston, USDA-ARS]



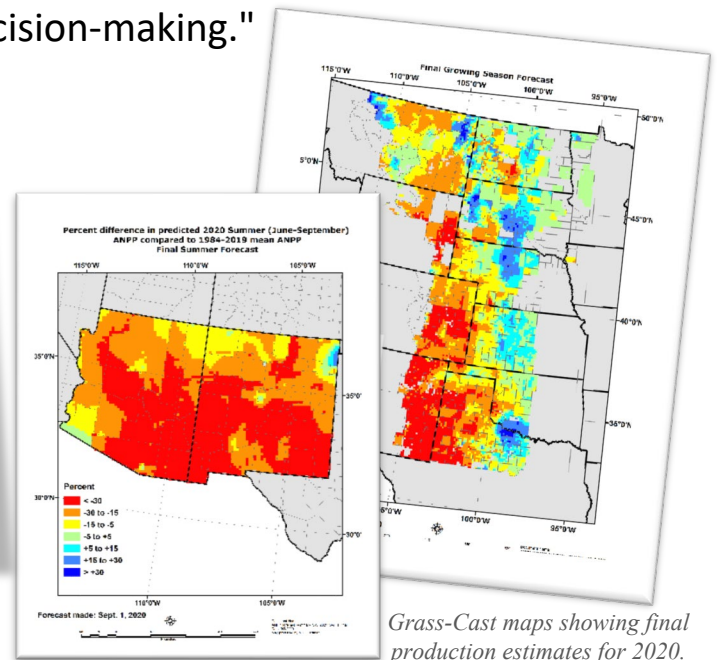
Climate Hub Coordinator, Windy Kelley, convenes and organizes the WCMT.  
[Photo credit: UW Extension]

## Science Synthesis & Tool Development

The Northern Plains Climate Hub contributed tools, resources, and references to the **USDA Office of the Secretary** to inform a presentation at the **G20 MACS International Virtual Experts Meeting on Promoting Sustainable Agriculture Development in Drylands**. The presentation, "Collaborative US Research Highlights," showcased **Grass-Cast** as one of five U.S. research and outreach efforts "providing farmers, ranchers, and agricultural partners access to tools and resources that enable sustainable agriculture and science-based, data-driven decision-making."



*Title slide from the USDA Office of the Secretary's presentation at the G20 MACS International Virtual Experts Meeting on Sustainable Dryland Ag.*



*Grass-Cast maps showing final production estimates for 2020.*



*Screenshot of NPCH, WWA, and NC-CASC participants during the 3-Centers' 2020 Virtual Summer Retreat.*

**USDA** Northern Plains Climate Hub  
U.S. DEPARTMENT OF AGRICULTURE



The **NPCH team** hosted a 2-day virtual retreat for 24 partners from **NOAA RISA Western Water Assessment (WWA)** and **DOI North Central Climate Adaptation Science Center (NC-CASC)**. These 3 climate centers meet regularly to enhance efficiency through knowledge exchange, collaboration and coordination. Each center contributes unique expertise in agriculture (NPCH), water (WWA), and ecosystems (NC-CASC). NPCH and NC-CASC are collaborating on a **climate vulnerability assessment for the northern mixed-grass prairies**, with funding from the **USDA Forest Service** and **NC-CASC**. NPCH and WWA are working together to estimate the **value provided by Grass-Cast**.