



DROUGHT AND AGRICULTURE IN SOUTHEAST ALASKA



Samia Savell
Juneau Field Office



Agriculture . . .

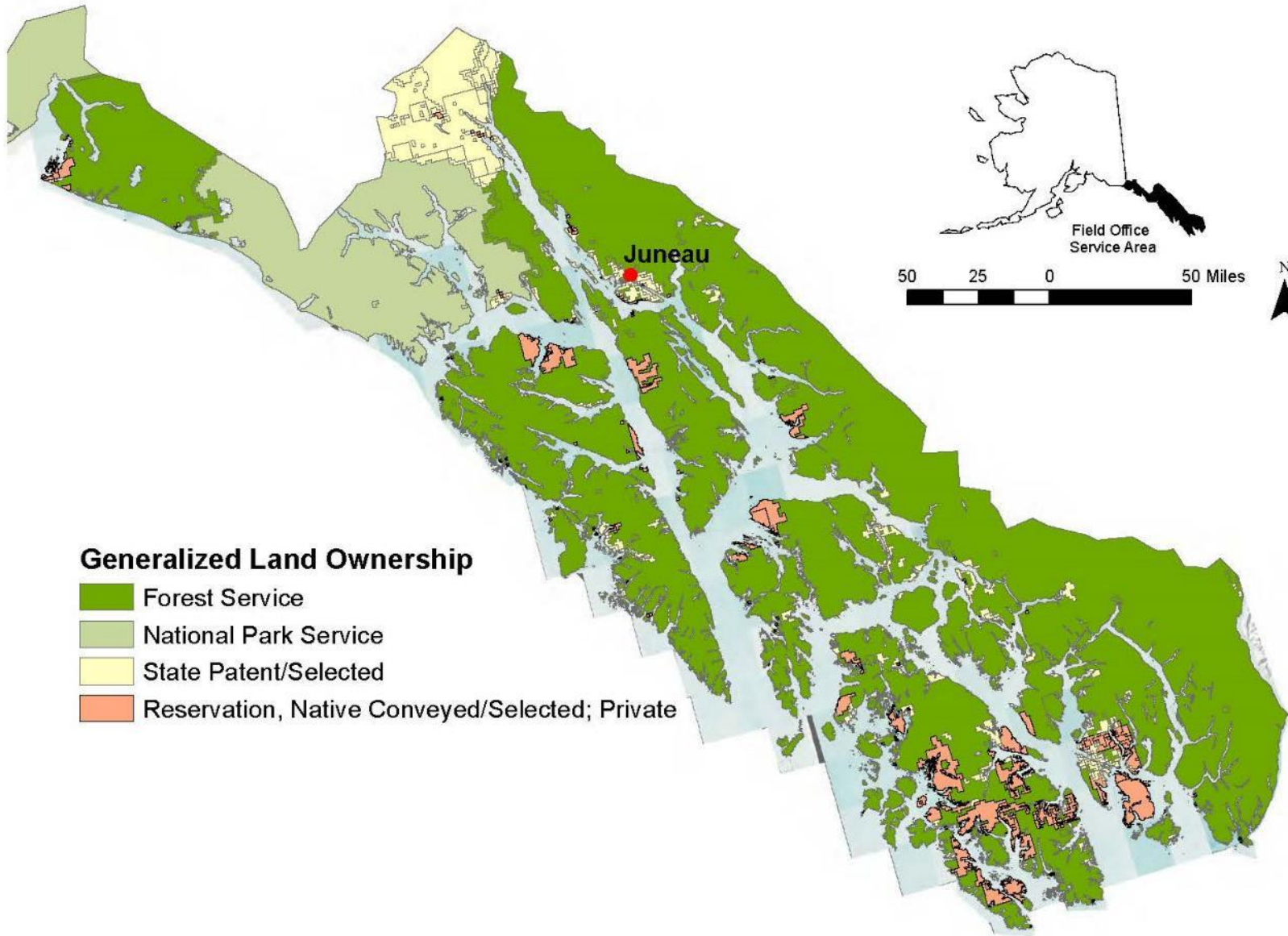


Conservation

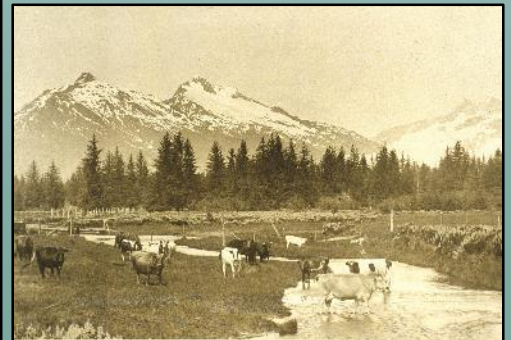
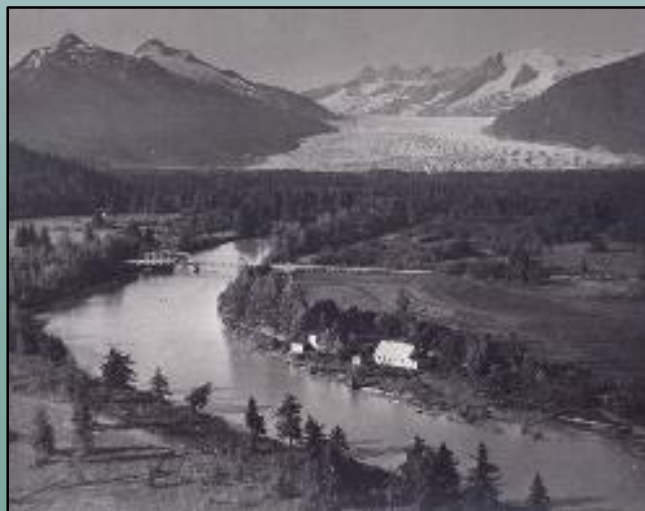


- Technical assistance
- Financial programs
 - *Support for conservation - which can also improve production*



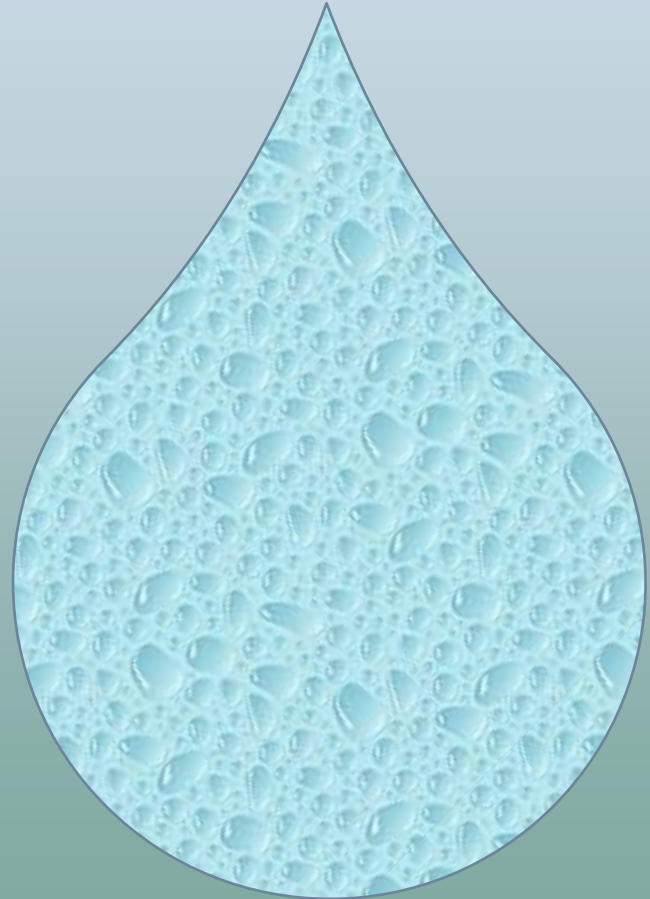


Farming in SEAK



Challenges

- Cool air and soil temperatures
- Short growing season
- Too much precipitation



Controlled environments

- Low hoops or row covers
- High tunnels
- Greenhouses



On the grid growing

- Municipal water
 - *NRCS can assist with irrigation*
 - *Consideration for municipalities: water being used for electricity as well as household/industrial uses*



Off the grid growing

- Surface water
- Groundwater
- Rainwater catchment



- *NRCS requires water rights for programs*
- *Instream flow reservations could help protect salmon*



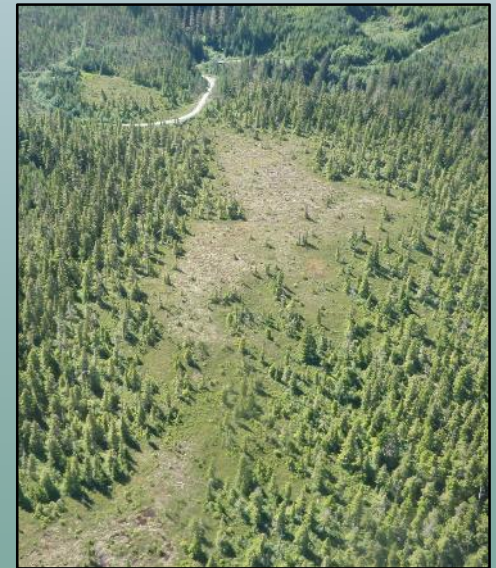
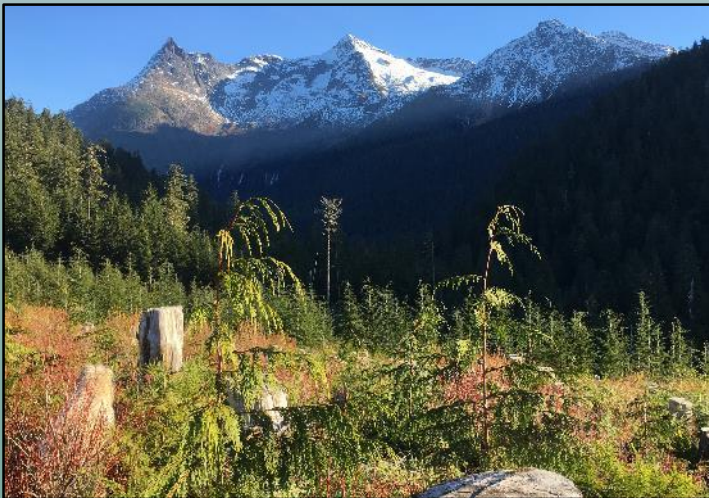
Private forest lands

- Post-harvest management
 - *Shorter rotation*
 - *Traditional foods and recreation*



Challenges

- Slash as fuel
- Organic soils as fuel
- Changing forests
- Changing streams



Questions?

Samia Savell
907-586-7220
Samia.Savell@ak.usda.gov

